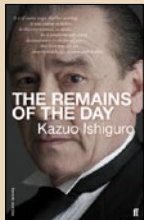




The Waterstone's Card guide to *Country House Fiction*

If you were one of the 9.2 million viewers of ITV's *Downton Abbey* last year, like us, you're sure to be looking forward to the new series. In preparation to re-enter the upstairs downstairs world of The English Country House we've selected our favourite books with one key element in common – a magnificent stately home. From housemaids to Lords and everyone in between, lose yourself in the wonderful world of Country House Fiction this autumn.

We love...

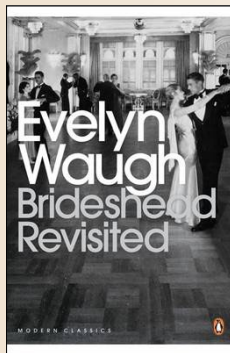


The Remains of the Day
Kazuo Ishiguro

This is the story of an English butler who sets off on a journey and starts reminiscing about his past. It's about missed opportunities, misplaced loyalty, passion and restraint, at times funny, but mostly moving and heartbreaking. Ishiguro's prose is subtle and elegant, among one of the most beautiful prose I've ever read in contemporary fiction. Truly one of my favourite novels!

Jane Pattiselanno
Waterstone's Amsterdam

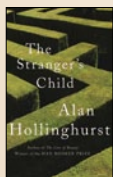
Read me first...



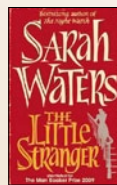
Brideshead Revisited
Evelyn Waugh

Brideshead Revisited looks back to the golden age before the Second World War. It tells the story of Charles Ryder's infatuation with the Marchmains and the rapidly-disappearing world of privilege they inhabit.

Something more recent...



The Stranger's Child
Alan Hollinghurst



The Little Stranger
Sarah Waters



Snobs/Past Imperfect Omnibus
Julian Fellowes



Fiennders Abbey
Jean Marsh

Then try...



Mansfield Park
Jane Austen



Atonement
Ian McEwan



The Go-Between
L.P. Hartley



Howards End
E. M. Forster

Downton Abbey...



The World of Downton Abbey
Jessica Fellowes

This companion book, full of rich historical detail, takes fans deep into the world of *Downton Abbey*. Including profiles of all the major characters, interviews with the actors and in-depth information on costumes and props.



Lady Almina and the Real Downton Abbey
Countess of Carnarvon

In this book, Lady Fiona Carnarvon, chatelaine of Highclere Castle, the real-life setting of TV's *Downton Abbey*, tells the true story of Almina, chatelaine of Highclere at the start of the First World War.